

DVD STATION INSTALLATION MANUAL

CONTENTS

INTRODUCTION	6
Specification.....	6
Package Contents.....	7
Caution.....	7
PART NAMES AND FUNCTIONS	8
Front Panel.....	8
Rear Panel.....	8
POWER SOURCE	9
HARDWARE INSTALLATION	10
SOFTWARE INSTALLATION	11
SOFTWARE INSTALLATION FOR WINDOWS 95/98	11
Windows 98.....	11
Windows 95 (B).....	12
Windows 95 (Older Versions).....	13
ENABLING 32-bit CARD SUPPORT	14
Software Installation for Windows NT.....	16
Installing the PCMCIA DVD-ROM under Windows NT	16
PLAYING A MOVIE	18
Using the PCMCIA Card and PowerDVD Program	18
System Requirements.....	18
Installing and Using PowerDVD	19
About the Video Playback Setup	20
PLAYING AN AUDIO CD	21
Using the CD Player Utility in Windows 95/98	21
Hot-Insert/Remove Feature of the PCMCIA DVD-ROM	21

PROBLEM SOLVING.....	23
If You Cannot Access a Disc in the Drive.....	23
If the Tray Does Not Slide Out.....	23
If You Cannot Access a Particular CD.....	23

**EXP Computer, Inc.
EXP Memory Products.**

Non-transferable Limited Warranty

EXP Computer Inc., and EXP Memory Products ("EXP") warrants that the Disk Traveler ("products") manufactured or distributed by EXP are free from failures due to defects in materials or workmanship for a full one year from the date of purchase of the products.

This warranty is void if the product is damaged by abnormal or improper use or by accident, abuse or if any attempt to repair or modify the product without authorization from EXP. Your sales receipt or invoice, showing the date of purchase and the name of the authorized reseller, is your proof of the date of purchase. During the warranty period, EXP will at its option, replace or repair, at no charge, the product that in its opinion is defective.

Before you return the failed products, contact EXP. You will need to obtain a Return Merchandise Authorization (RMA) number by calling EXP's Technical Support Department at (516) 496-7629. The RMA number should be displayed on the outside of the returning package and on the accompanying packing list. EXP cannot be held responsible for any package returned without the RMA number. You are responsible for packaging, providing proof of the date of purchase and the shipping cost of the failed product to EXP Computer, Inc. You are responsible for mailing the warranty registration card. The warranty claims may not be honored if there is no corresponding registration card on file at EXP.

IN NO EVENT WILL EXP BE LIABLE FOR ANY DIRECT, INDIRECT, SPECIAL, INCIDENTAL OR CONSEQUENTIAL DAMAGE, INCLUDING LOSS OF PROFIT, LOSS OF SAVINGS; OR ANY OTHER DAMAGES CAUSED BY PRODUCT OR FAILURE OF THE PRODUCT TO PERFORM.

This limitation of liability applies even if EXP has been advised of the possibility of such damages. Some states do not allow the exclusion or limitation in incidental or consequential damages, so the above exclusion or limitation may not apply to you.

How to contact us:

EXP WEB SITE: WWW.EXPNET.COM

TECHNICAL SUPPORT: 516-496-7629

TECHNICAL SUPPORT E-MAIL: support@expcomputer.com

INTRODUCTION

The DVD Station is an external DVD-ROM drive with the latest 32bit Cardbus technology high-speed PC Card. The DVD Station allows you to watch DVD movies* on a laptop computer in conjunction with the bundled MPEG2 decoding program. The drive can also read other CD-ROM standards as well (e.g. CD-R, CD-RW, etc.).

SPECIFICATION

External Drive Dimensions: 9.6" x 6.4" x 1.9" (L x W x H)

Weight: 3 lb. 3 oz.

Interface: PC Card (Cardbus)

MPEG2 Decoding: Cyberlink PowerDVD (Windows 95/98 **only**)

DVD-ROM Reading: Windows 95, 98, and Windows NT 4.0

Power required: 12V DC 1Amp.

Data Transfer Rate:

Sustained Mode 1350-2700 max KB/sec

(DVD) 1035-2400 KB/sec (CD-ROM)

Burst (ATAPI) 16.7 MB/sec

Buffer Cache Size: 128K

Access Time:

Average Random Seek (DVD) 110 ms

Average Random Seek (CD 16x) 110 ms

Average Random Access (DVD) 180 ms

Average Random Access (CD 16x) 120 ms

Full Stroke 250 ms (Both)

Media Capacity:

Single Side - Single Layer 4.7 GB

Single Side - Double Layer 8.5 GB

Double Side - Single Layer 9.4 GB

Double Side - Double Layer 17.1 GB

Compatible Format Standards:

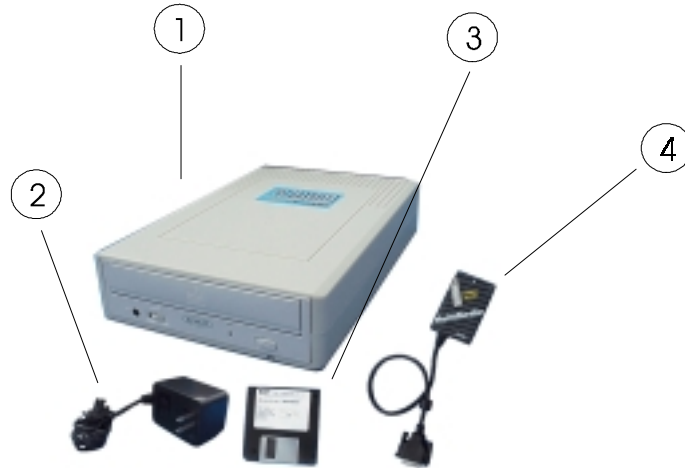
DVD-ROM, DVD Video, CD-ROM XA, CD-I BRIDGE (Photo CD, Video CD), CD-I READY, CD-DA CD-G, Multi-session (Photo-CD), CD EXTRA, CD-RW and CD-R

*** System Requirements for DVD movies -**

Windows 95 or Windows 98 Only

Pentium 266MHZ or higher or system with MPEG2 decoding capability built-in

Package contents



The items shown below are included in the CD-Station package.

1. CD-ROM drive
2. AC Adapter Input: 120 VAC Output: 12 VDC 1 Amp.
3. Device Driver diskette
4. PC Card

CAUTION

- Condensation can form on the lens if the DVD-ROM drive is moved from a cold temperature to a warmer environment. This can result in the lens's inability to properly read the disc. If this occurs, remove the disc and leave the power on. After one hour, reinsert the disc and try again.
- Do not expose the disc to the direct sunlight. Do not store the disc in a room with high temperature or high humidity.
- Always store the disc in its case to avoid dust, scratches, bending, etc.
- Use a soft and dry cloth to wipe the disc in a circular motion. Do not use benzine, record cleaner, static electricity prevention fluid, or any other liquid as it may damage the disc.

PART NAMES AND FUNCTIONS

FRONT PANEL

The front panel of your DVD-ROM drive may look slightly different from the figure shown below. The important parts and functions; however, are the same regardless of their location on the drive.

1. Eject button:

Press this button to eject the tray.

2. Access LED:

This LED will blink when the drive is accessing the disc.

3. Emergency Hole:

Manually insert a pin shaped item to eject the tray during a power off.

4. Power LED:

This LED will light when the power is on.

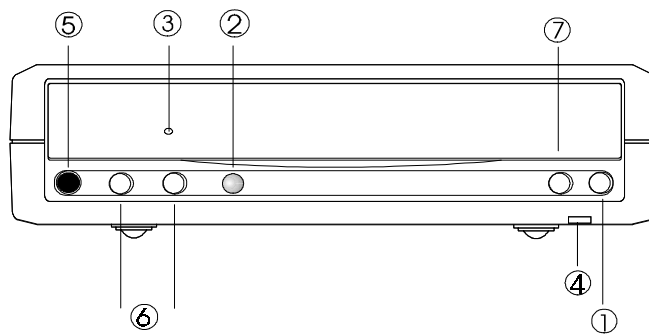


Figure 1

REAR PANEL

1. Power Button:

Press the button to manually power on/off the drive when the AC adapter powers it.

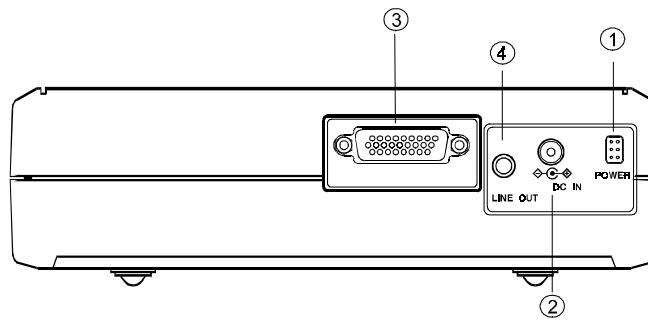
2. DC in Jack:

Connect the AC adapter here.

3. PCMCIA Interface Connector:

Connect the drive to the PCMCIA interface card.

4. Audio Line-Out Jack:



Sends an audio signal to an external amplifier.

Figure 2

POWER SOURCE

An AC adapter powers the DVD-ROM drive. The POWER LED indicates the power status, which will always light up when the power supply is in the normal condition.

1. Connect the AC adapter into the DC IN jack at the rear panel of the DVD-ROM drive.
2. Plug the AC adapter into the AC power outlet.
3. Insert the PCMCIA card. Now the DVD-ROM drive is ready to go.

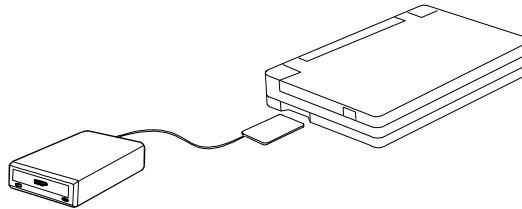
CAUTION

Use only the AC adapter that is provided with this unit. Using a different AC adapter may cause serious and permanent damage to the DVD-ROM drive.

HARDWARE INSTALLATION

Power **off** your system before connecting the PCMCIA DVD-ROM to your computer.

1. Plug the AC adapter into the DC in Jack (rear panel), and then connect the PCMCIA interface card to the DVD-ROM drive. Press firmly until the connector is seated, and tighten the two screws on the cable connector.
2. Place the drive in a horizontal position. The drive is designed to operate only in a horizontal position. Operating the drive in any other position is not recommended.
3. Make sure that the cable of the PCMCIA interface card is firmly connected to the interface connector at the back panel of the DVD-ROM drive.
4. Locate the PCMCIA slot of your computer or consult your computer user's manual for its location.
5. Align the PCMCIA interface card with the arrow sign facing upward and pointing toward the computer's slot. (Please note that the card is keyed to guide for proper insertion.)
6. Slowly insert the PCMCIA interface card into the slot and press firmly until the connector is seated.
7. Turn the system ON to install the PCMCIA DVD-ROM device driver. Please follow the Software Installation procedures in the next section.



CAUTION

You should connect the PCMCIA interface card to the DVD-ROM drive before inserting the PCMCIA interface card into your computer. **DO NOT** connect/disconnect the PCMCIA interface card to/from the DVD-ROM drive when the system is in the power-on state.

SOFTWARE INSTALLATION

SOFTWARE INSTALLATION FOR WINDOWS 95/98

If you are inserting the PCMCIA DVD-ROM into your computer for the very first time, use Windows 95/98. Listed below are all the screen displays for reference. (Your PC Card name may be different)

Windows 98

Add **New Hardware Wizard** will be displayed.



Click **Next** twice to display the screen below. Windows will search for a driver, make sure the **Floppy disk drive** and **Specify a location** items are checked and that **A:\win95** is displayed in the drop box. Click **Next** and then **Finish** to complete the installation.



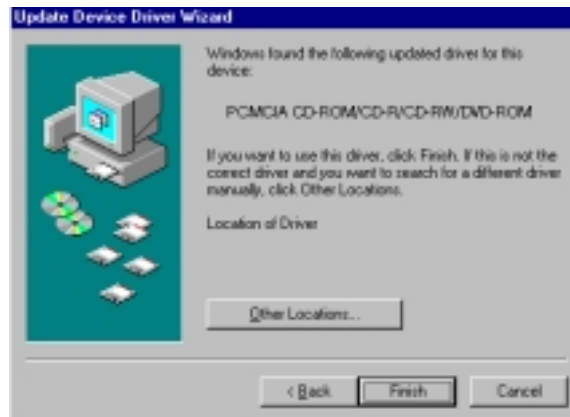
Windows 95 (B)

If the **Update Device Driver Wizard** dialog box appears as below, it means your Windows 95 is version 4.00.950B, i.e. OSR 2.



In this case, perform the following steps for installing the PCMCIA DVD-ROM under Windows 95. Otherwise, ignore this section and skip to the next section for installing the PCMCIA DVD-ROM for Windows 95 (Older Versions).

1. Insert the PCMCIA DVD-ROM device driver disk into the floppy drive.
2. Click the **Next** button.

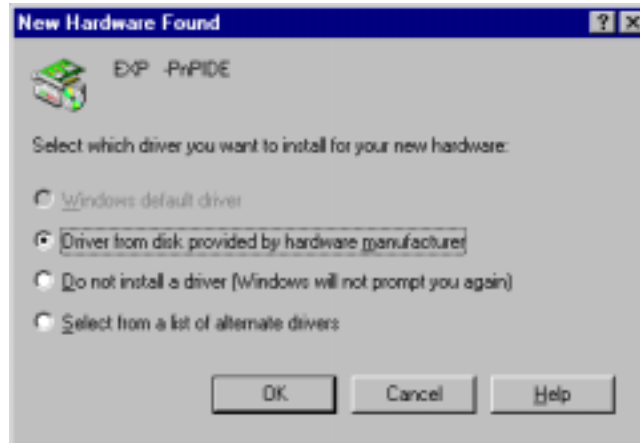


3. Click the **Finish** button. All the remaining installation procedures will then finish automatically.

Note: It is not necessary to connect the PCMCIA DVD-ROM every time you reboot your computer; connect it only when you need to use it.

Windows 95 (Older Versions)

The following dialog will appear if you are using the PCMCIA DVD-ROM under Windows 95 for the very first time and your Windows 95 is version 4.00.950 or 4.00.950a.



(If the dialog box does not appear and the DVD-ROM folder cannot be found in **My Computer**, please refer to the section entitled, “**Enabling 32-bit Card Support.**”)

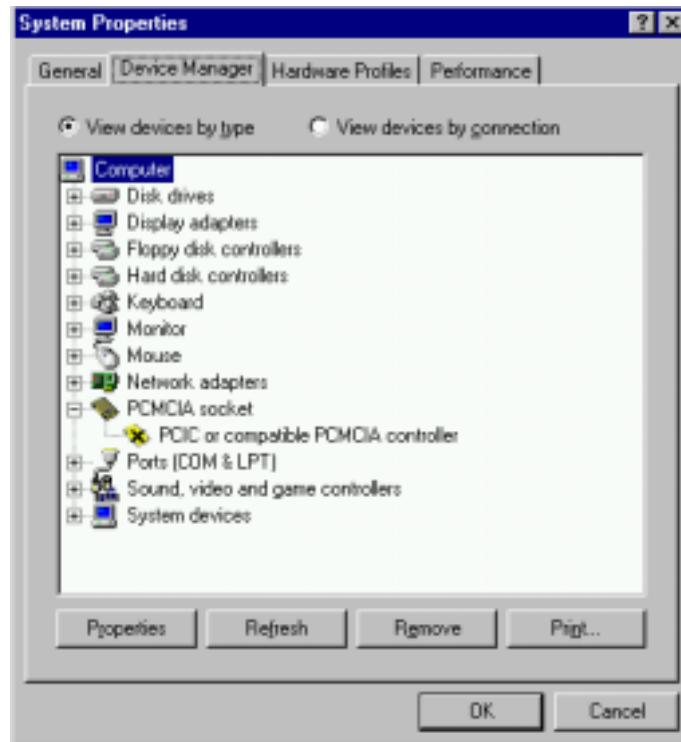
Referring to the display above, select **Driver from disk provided by hardware manufacturer** and click the **OK** button. Windows 95 will then prompt you to insert the manufacture’s installation disk. Insert the PCMCIA DVD-ROM device driver disk into your floppy drive. Specify the directory as **A:** (or **A:\ win95**) and select **OK**. All the remaining installation procedures will then finish automatically.

Note: It is not necessary to connect the PCMCIA DVD-ROM every time you reboot your computer; connect only when you need to use it.

ENABLING 32-bit CARD SUPPORT

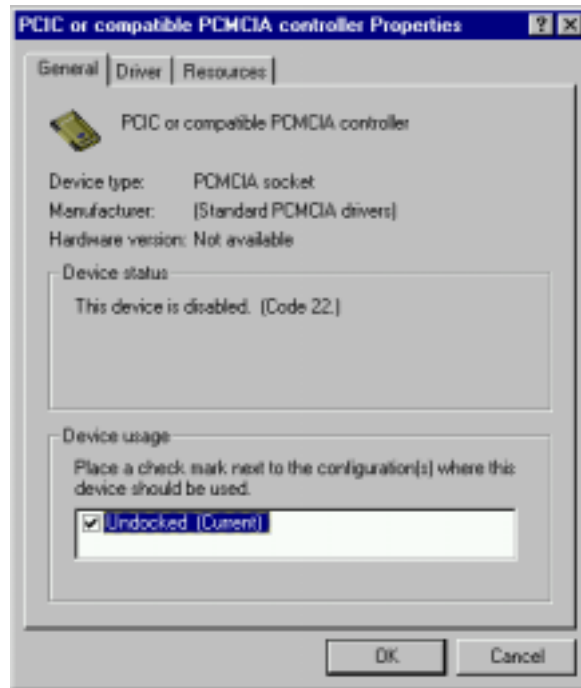
Note: The following procedures apply to the notebook that have installed or re-installed the original release of the Windows 95 version 4.00.950 or 4.00.950a.

Your system should be ready for PCMCIA socket support prior to operating the PCMCIA DVD-ROM. To check whether your computer has the PCMCIA Socket supported, double-click on the **System** icon from the **Control Panel** folder (You can find the **Control Panel** folder by going to the **Start** menu. Pull up the **Start** menu, select **Settings** and then click on the **Control Panel** folder.)



Click on the **Device Manager** tab. If an “x” appears next to the **PCIC or compatible PCMCIA Controller** item, as shown above, it means the PCMCIA device driver is not using 32-bit Card Support.

Double-click on the **PCIC or compatible PCMCIA Controller** item, and a dialog box will be displayed, as shown on the next page. Place a check mark next to the current configuration of the **Device usage** box, then select **OK**.



After the PCMCIA 32-bit Card Support is installed, Windows will ask you to reboot your computer. You should now refer to the previous section for installing the PCMCIA DVD-ROM device driver.

If the PCMCIA Socket is not found, you must add a PCMCIA socket to your system. Please click on the **Adding New Hardware** icon in the **Control Panel** folder and select **PCMCIA socket**. Select the appropriate type of PCMCIA Controller that matches yours and follow the on-screen instructions.

SOFTWARE INSTALLATION FOR WINDOWS NT

Make sure of the following before you begin:

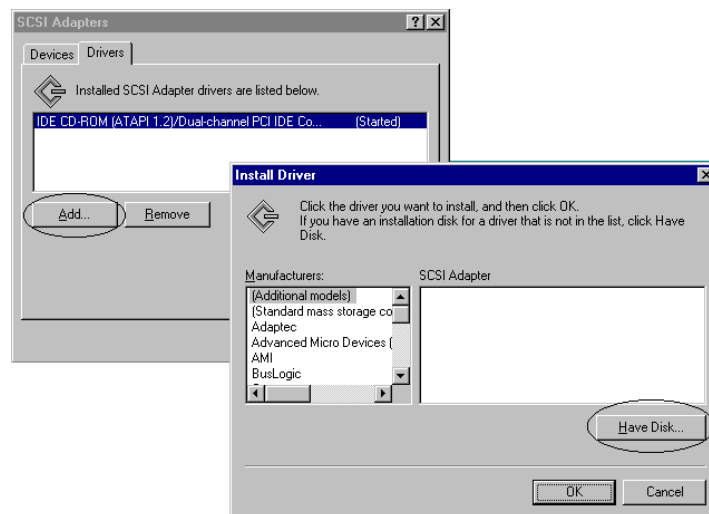
- ◆ Windows NT must be version 3.51 or higher.
- ◆ Since Windows NT does not support the “Hot Insert/Remove” feature, the PCMCIA DVD-ROM should be connected with your computer **prior** to starting Windows NT. Likewise, **do not** remove the PCMCIA DVD-ROM before you shut down Windows NT.
- ◆ In Windows NT, the I/O and IRQ settings of PCMCIA DVD-ROM cannot be changed. Therefore, if the settings conflict with other devices you are using, change the I/O or IRQ of other device to avoid conflicts.
- ◆ Currently, there is no DVD software decoder for Windows NT. The DVD-ROM will read data that is DVD-ROM or CD-ROM.

Installing the PCMCIA DVD-ROM under Windows NT

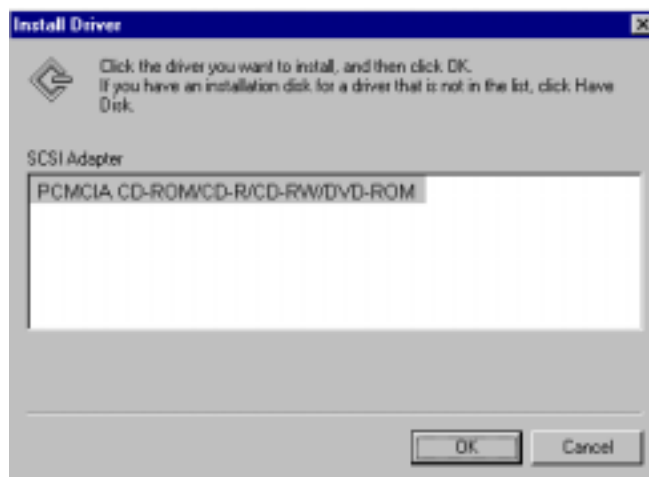
In Windows NT 4.0, go to the **Start** menu and select **Settings**. Then click on the **Control Panel** folder. Once the Control Panel appears, double-click on the **SCSI Adapter** icon.



Click the **Drivers** tab, and the figure illustrated below will be displayed.



Click the **Add** button, and then click the **“Have Disk...”** button (as shown on the previous page). Windows NT will then prompt you to insert the manufacturer installation disk. Insert the device driver disk into your floppy drive. Specify the directory as **A:\WINNT** or **B:\WINNT** (whichever contains the diskette) and click **OK**. When the following dialog box appears, select the **PCMCIA DVD-ROM/CD-R/CD-RW/DVD-ROM** and then click the **OK** button.



Follow the on-screen instructions to continue. After finishing, Windows NT will prompt you to restart your computer to activate the new device driver for Windows NT.

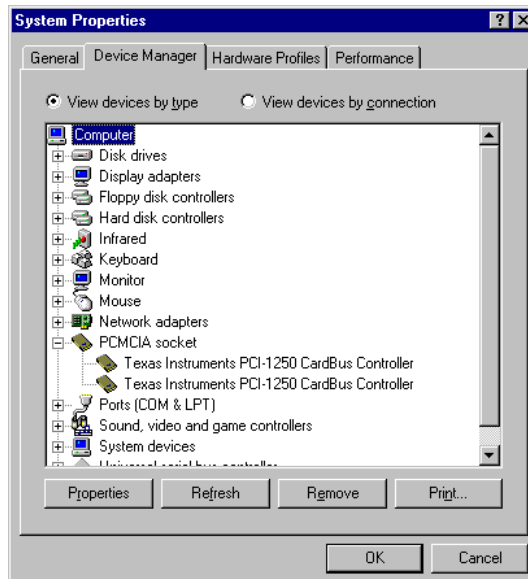
PLAYING A MOVIE

USING THE PCMCIA DVD-ROM CARD AND POWERDVD PROGRAM.

System requirements:

- Windows 95 OSR2 or Windows 98 operating system **ONLY**
- Pentium II 266 Mhz is the minimum requirement
- 32 MB DRAM (Synchronized DRAM recommended)
- CardBus Controller with DMA support

To check if your PCMCIA controller is a CardBus controller and also has DMA support, pull up the **Start** menu; select **Settings** and click on the **Control Panel** folder. Then double-click on the **System** icon. When the window below appears, select the **Device Manager** tab and the screen below will be displayed.



Double-click on **PCMCIA Socket** to verify if your PCMCIA Socket is Texas Instruments PCI-xxx CardBus Controller (except for TI PCI-1221). If so, the PCMCIA controller has CardBus with DMA. The PCMCIA DVD-ROM works best with the TI controller and DMA. If your system is not using the TI controller, we recommend that you use the PCMCIA DVD-ROM with an MPEG-2 decoder card for better performance.






Installing and using PowerDVD

PowerDVD is a playback program for DVD titles or MPEG-2 files. To install and use PowerDVD, follow the instructions below.


1. Prior to installing PowerDVD, the PCMCIA DVD-ROM should be installed beforehand. Refer to the PCMCIA DVD-ROM installation procedure in this manual for details.
2. Verify if the notebook has an additional CD-ROM drive icon in **My Computer**. You may have to restart the computer after the installation is completed to activate the DVD-ROM.
3. Insert the PowerDVD CD into your PCMCIA DVD-ROM. The installation will proceed automatically. Follow the on-screen instructions. During the installation, PowerDVD will prompt you to input the CD-Key, printed on the sticker of the CD jacket.
4. After the installation is completed, you may start the playback of DVD titles or MPEG-2 files.

There is a demo file named *democlip* on PowerDVD CD for you to try. Follow the steps below:

Go to Start => Program => Cyberlink => PowerDVD. Click

PowerDVD. The panel shown below will appear. Make sure  appears, and click . Alternatively, if you want to playback DVD titles, click on  to toggle to , and click .



You may move the mouse to any button and a hint will appear accordingly to indicate its function. You may also click on  for the On-line help manual.


About Resolution:

For notebooks using TFT display technology: The display resolution for this type of notebook is fixed; therefore, if a dialog box prompts you to change the resolution, we recommend that you select **Cancel** to maintain the current resolution.

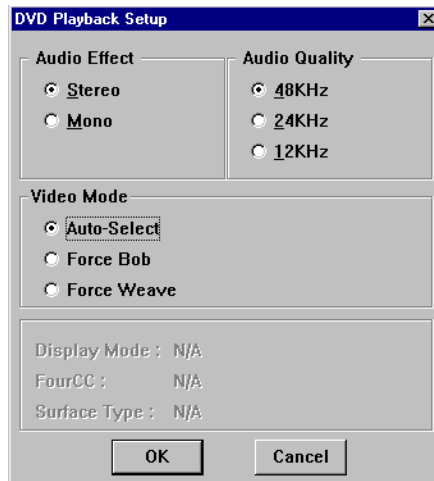
About the Video Playback Setup

The PowerDVD employs three video modes:

1. Auto-Select (Default)
2. Force Bob
3. Force Weave

Click on  to change the system configuration.

For a notebook with slower CPU than Pentium II 266MHz we recommend that you select the Force Bob mode to get a better playback result. We also recommended that you check the option **Auto-Select**, and PowerDVD will automatically determine the best video mode for you.



PLAYING AN AUDIO CD

USING THE CD PLAYER UTILITY IN WINDOWS 95/98

1. Connect the 3.5mm stereo audio cable from the Line-Out Jack of your DVD-ROM to your notebook's Line-In Jack, or to a self-amplified speaker.
2. Make sure the CD Player utility has been installed in your Windows 95/98. If not, go to your Desktop and double-click the **My Computer** icon, then on the **Control Panel** folder. Now double-click on the **Add/Remove Programs** icon and select the **Window Setup** tab. Then select the **Multimedia** item in order to add the CD Player.
3. Place an Audio CD in your DVD-ROM tray.
4. After closing the tray, the CD Player will automatically play the audio CD.

Hot-Insert/Remove feature of the PCMCIA DVD-ROM

The PCMCIA DVD-ROM, being a storage device itself, cannot be hot-inserted/removed (which means to insert/remove the card from your system without rebooting or turning off your system) when it is accessing data. To avoid system failure, read the following instructions carefully before using the hot-removing feature.

For Windows 95 hot-swapping is allowable, but with more limits. To avoid system failure, always follow the steps below to hot-remove the PCMCIA DVD-ROM in Windows 95,

1. Click the PC card indicator on the task bar at the bottom right of the screen.
2. Click the command to stop the card you want to remove.
3. When the screen prompts, read the instruction carefully. If the system prompts you not to remove the card, **DO NOT** remove the card. You should exit the present application and return to step 1.
Be sure you are removing the card by the procedures described above; otherwise, the following dialog will be displayed:



To display the PC card indicator on the task bar, perform the following steps:

1. Double-click the **PC Card (PCMCIA)** icon on the Control Panel.
2. Make sure the box showing the control on the task bar is checked. If the PC Card (PCMCIA) wizard appears when you click the button in step 1, follow the instructions. Restart your computer, then double-click the **PC Card (PCMCIA)** icon in the Control Panel, and check the box to view the status indicator on the task bar.

PROBLEM SOLVING

The following are solutions for some problems you may encounter while using the PCMCIA DVD-ROM.

IF YOU CANNOT ACCESS A DISC IN THE DRIVE

Solutions:

- ❖ Make sure the AC adapter is securely connected to the drive and to the outlet.
- ❖ Make sure the tray has been closed properly. Press gently and firmly until it clicks into place.
- ❖ Eject the tray and remove the disc to make sure the tray is clean. Any dirt may interfere with the laser beam.
- ❖ Examine the disc to see whether it is dirty. If necessary, wipe it with a clean tissue.
- ❖ Replace the disc in the tray. Make sure the disc is lying flat with the label side up. Push to close the tray completely.

IF THE TRAY DOES NOT SLIDE OUT

Solutions:

- ❖ Check the power LED to make sure the drive is powered on.
- ❖ There is an emergency hole on the front panel next to the eject button. Insert a pin-shaped item (e.g. paper clip) to manually eject the tray. Make sure there is no power to the drive.

IF YOU CANNOT ACCESS A PARTICULAR CD

Solutions:

- ❖ Check the type of the CD you are using. The drive supports ISO 9660, Audio CD, Video CD.
- ❖ The color of the materials used to make the CD can also affect its reliability. Silver colored CDs are the most reliable, followed by gold-colored CDs. Green-colored CDs are the least reliable.